

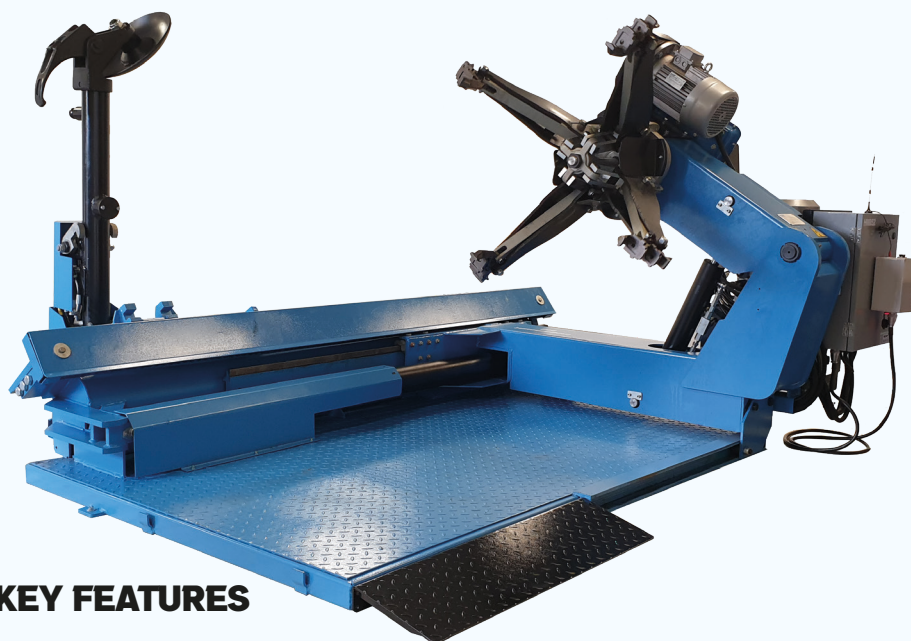
MEGAMOUNT 852-2



HEAVY DUTY COMMERCIAL VEHICLE TYRE CHANGER

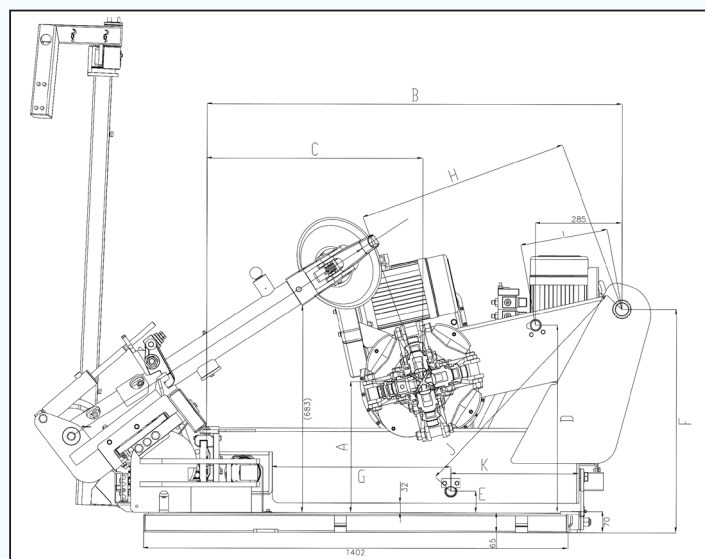
The king of truck changers

The megamount 852-2 is an extremely heavy duty unit for handling the widest variety of CV and plant rims, from buses to earthmover. Improvements over its predecessor, the 852, include a fully portable, wireless control unit, a larger machine base for greater stability, and a better engineered positioning of the hydraulic ram, inside the main arm of the machine, creating a more even load distribution and offering greater control.

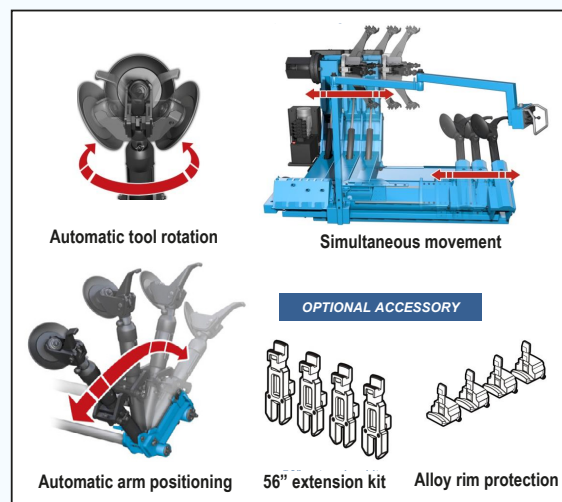


KEY FEATURES

- Two chuck rotation speeds
- Two independent trolleys with simultaneous movement at two speeds
- Automatic tool rotation and arm positioning
- Wireless control unit as standard



Position	Testing size
A	430
B	1380
C	716
D	620
E	70
F	740
G	589
H	696
I	290
J	825
K	423



This 3-phase machine is capable of changing tyres on rims from 14" (355mm) to an impressive 46" (1168mm) in standard configuration but the addition of extensions increase this to a huge 56" (1422mm). Tyres up to 103" (2600mm) in diameter and 59" (1500mm) wide are handled with ease. The industrial strength gearbox and clamping chuck allow the megamount 852 to operate in the harshest conditions, such as mining facilities and military field operations.

SPECIFICATIONS

Clamping capacity:	355 mm/14" - 1168 mm/46" (1422 mm/56" with extensions)
Max. tyre weight:	16700 kg
Max. tyre diameter:	2600mm (103")
Max. tyre width:	1500 mm (59")
Hydraulic power unit motor:	4.0 kW
2-speed gear motor:	2.6 kW/3.2kW, 5-10 rpm
Max. torque:	3550 Nm
Bead breaking force:	3500 kg
Max. operating pressure:	130 bar